


J7 NP40
J8 NP-35
J25 Alpha 2

J25 Programmer



Number	Enable	Capcode	Auto Increment	Frame
1	<input checked="" type="checkbox"/>	8	0	0
2	<input type="checkbox"/>	9	0	1
3	<input type="checkbox"/>	10	0	2
4	<input type="checkbox"/>	11	0	3
5	<input type="checkbox"/>	12	0	4
6	<input type="checkbox"/>	13	0	5

Capcode Management

Manually Increment

Startup Text

Hello

Advanced Settings Password

XXXXXXXXXX OK

Print Save Load Write Read

USB programmer disconnected NO PAGER

Input "service123" to enter
More menu

J25 Programmer

General | Display | Alerting | Misc | Reminders | Duplicate Messages

Capcodes

Number	Private	Enable	Capcode	Auto Increment	Frame
1	<input checked="" type="checkbox"/>	<input checked="" type="checkbox"/>	8	0	0
2	<input checked="" type="checkbox"/>	<input type="checkbox"/>	9	0	1
3	<input checked="" type="checkbox"/>	<input type="checkbox"/>	10	0	2
4	<input checked="" type="checkbox"/>	<input type="checkbox"/>	11	0	3
5	<input checked="" type="checkbox"/>	<input type="checkbox"/>	12	0	4
6	<input checked="" type="checkbox"/>	<input type="checkbox"/>	13	0	5

Serial Number: 1234567890

Don't write Serial Number (Keep existing): ☐

Frequency: 148.3375

Frequency Band: 143 MHz - 151 MHz

Baud Rate: 1200bps

POCSAG Polarity: Standard

Capcode Management

Manually Increment

Print | Save | Load | Write | Read

USB programmer disconnected | NO PAGER

Standard or Inverse

J25 Programmer

Folders Out Of Range Over The Air Hand Program Tones Names

General **Display** Alerting Misc Reminders Duplicate Messages

Display Options

Startup Text

Options

Enable message preview mode ☐

Remove all reference to time on pager ☐

Disable the message status ☐

Time stamp messages ☒

Report alert when max msgs reached ☐

Messages

Maximum number of stored messages

Message number display format

Battery

Low Battery Alarm Timeout

Vibrate when battery low ☐

LCD

Display Time

Contrast

Print Save Load Write Read

USB programmer disconnected NO PAGER

Contentious Motor ON when Low Battery

"Message Full" display appeared when received New message at memory full condition

Only number
Number / Total No. of messages
No number

J25 Programmer

Alerting

Alerting Options

Allow user to select tone: Full System Select

Vibrate alert pattern: Continuous

Visible alert modes: T/V/T+V/M T=Tone, V=Vibrate, M=Mute

Alert length: 9 seconds

Text replacement for tone only messages

☒ Replace Tone Only Messages with user text

Tone A: ToneOnly A

Tone B: ToneOnly B

Tone C: ToneOnly C

Tone D: ToneOnly D

Beep Code Management

Tone A: A Call

Tone B: B Call

Tone C: C Call

Tone D: D Call

Print Save Load Write Read

USB programmer disconnected NO PAGER

Continuous.. Vibrate continuously
Pulse .. Vibrate On/Off/On/Off....
Synchronize.. Vibrate with a,b,c,d cadence

When receiving Tone Only signal, pager will display Canned message

J25 Programmer

General Display Alerting **Misc** Reminders Duplicate Messages

Miscellaneous

Message slot number order: Assign oldest message to slot 1

Date format: MM/DD/YY

Ability to protect messages from deletion: ☒

Show daily alarm in menu: ☒ Pocsag Error Reduction: ☐

Disable ability to turn pager off: ☐ Select Language: USA - Icon Menus

Ability to delete messages: ☒ Number of Keys: 4 Keys

Ability to access the telephone directory: ☐ Backlight Control: Press ENT key for 2 secs


Print Save Load Write Read

USB programmer disconnected NO PAGER

Selected UK ... Recommended, Menu come by Up/Down key
Selected USA..... Icon menu come by pressing Red key for 2 sec

Fixed on 4 keys

J25 Programmer



Folders Out Of Range Over The Air Hand Program Tones Names

General Display Alerting Misc **Reminders** Duplicate Messages

Unread Message Reminder

Unread message reminder alert ☒

Remind user every 15 minutes

Number of reminder beeps Two reminders

Unread message indication ☒

Print Save Load Write Read

USB programmer disconnected NO PAGER

Set each Reminder beep interval time... 1,2, 5, 10, 15 minutes

J25 Programmer

Folders Out Of Range Over The Air Hand Program Tones Names

General Display Alerting Misc Reminders **Duplicate Messages**

Duplicate message checking

Enable ☐

Display Duplicate Message Icon ☐

Detect time 1 minute

Repeat message tone pattern Normal

Print Save Load Write Read

USB programmer disconnected NO PAGER

Set time to activate duplicated message condition.
Within set time, pager will treat as duplicated message
and more than that pager will treat as repeated message

When pager received Repeated message, pager
Should beep normal beep or short beep

J25 Programmer

General Display Alerting Misc Reminders Duplicate Messages

Folders Out Of Range Over The Air Hand Program Tones Names

Number	Enable	Name	Alert	Number	Enable	Name	Alert
1	<input type="checkbox"/>	1111	Short	7	<input type="checkbox"/>	777	Short
2	<input type="checkbox"/>	2222	Short	8	<input type="checkbox"/>	8888	Short
3	<input type="checkbox"/>	3333	Short	9	<input type="checkbox"/>	9999	Short
4	<input type="checkbox"/>	4444	Short	10	<input type="checkbox"/>	aaaa	Short
5	<input type="checkbox"/>	5555	Short	11	<input type="checkbox"/>	bbbb	Short
6	<input type="checkbox"/>	6666	Short	12	<input type="checkbox"/>	cccc	Short

Print Save Load Write Read

USB programmer disconnected NO PAGER

Each holder has Name of Holder

Holder normally used for Public message and way of message memory should "Mail Box" manner which is only display latest message.

Holder can be set only Cap Code 4,5,6
Each cap code has 4 beep codes, so that total of 12 holders are provided

When received public message,
selected short beep, normal beep, no beep

J25 Programmer

General Display Alerting Misc Reminders Duplicate Messages

Folders **Out Of Range** Over The Air Hand Program Tones Names

Out of range

Enable ☒

Enable warning message when out of range ☐

Enable vibrate when out of range ☐

Show icon when out of range

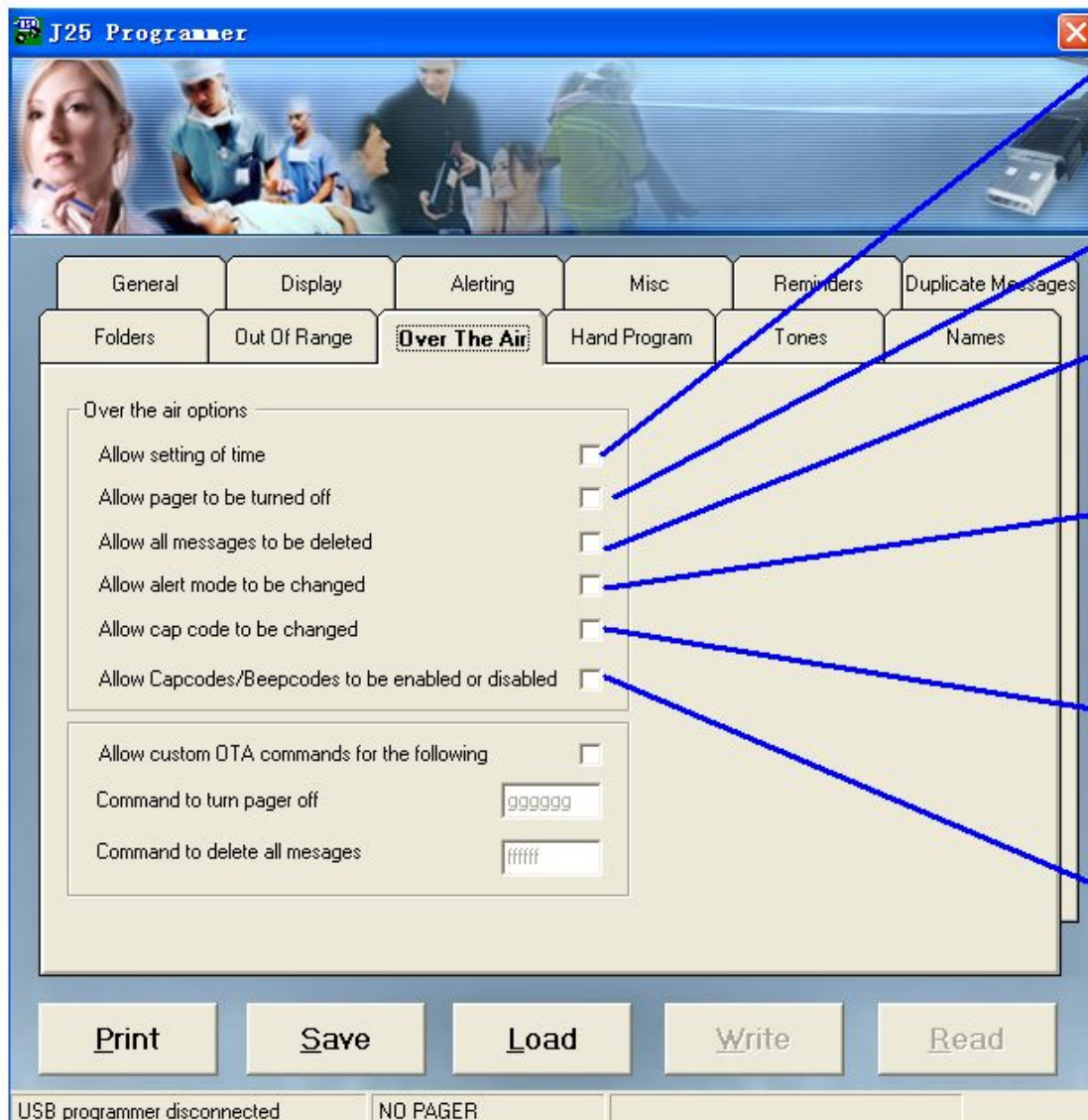
Detect time 6 minutes

Print Save Load Write Read

USB programmer disconnected NO PAGER

When pager in the Out of Range, "OUT OF SERVICE" message appeared

When page in the Out of Range conditions more than 6 minutes, pager will Vibrate continuously.



OTA set time can change the pager current time setting by OTA command.
Date can not be changed.

```
[ 0090 ][ ____ - 0 ]    ____ 24h
[ 0090 ][ ____ - 1 ]    ____ AM
[ 0090 ][ ____ - 2 ]    ____ PM
```

Pager will turn off the power automatically when receiving the OTA command.

```
[ 0091 ][ 0 ] ..... Power Switch Off.
```

Pager will delete all the messages in the memory including the unread / protected messages.

```
[ 0092 ][ 0 ] ..... All messages deleted
```

OTA alert set can change the Alert mode beep, vibrate, beep+motor, mute by OTA.

```
[ 0093 ][ 0 ]    alert mute
[ 0093 ][ 1 ]    alert beep
[ 0093 ][ 2 ]    alert vibrate
[ 0093 ][ 3 ]    alert beep+vibrate
```

OTA cap code and baud rate function can change the cap code of address-1 and can change the baud rate for all cap codes.

```
[ 0094 ][ ____ ][ 1-512 ]  Capcode ____ 512bps
[ 0094 ][ ____ ][ 1-120 ]  Capcode ____ 1200bps
[ 0094 ][ ____ ][ 1-240 ]  Capcode ____ 2400bps
```

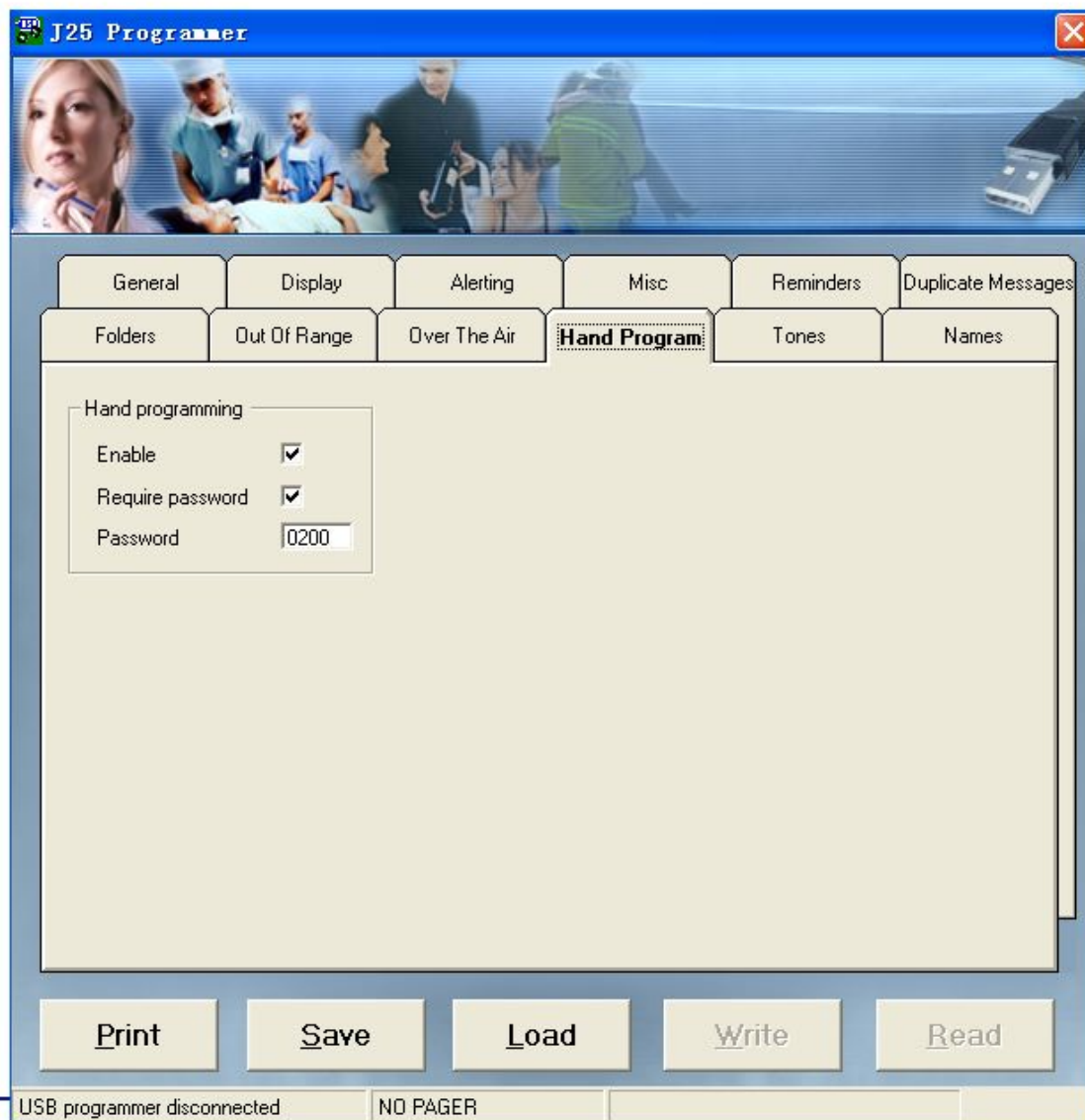
OTA address/function able/disable function can control the validity of the address / function freely to able/disable at the any address and cap codes.

- address / function disable OTA

```
[ 0095 ][ 1A ][ 0 ]    address 1A disable
[ 0095 ][ 1B ][ 0 ]    address 1B disable

[ 0095 ][ 6C ][ 0 ]    address 6C disable
[ 0095 ][ 6D ][ 0 ]    address 6D disable


[ 0095 ][ 6C ][ 1 ]    address 6C able
[ 0095 ][ 6D ][ 1 ]    address 6D able
```



Enter Hand Programming

Depressing Green Key and insert the battery

J25 Programmer



General	Display	Alerting	Misc	Reminders	Duplicate Messages
Folders	Out Of Range	Over The Air	Hand Program	Tones	Names

Priority

	[1]	[2]	[3]	[4]	[5]	[6]
Tone A	Normal	Normal	Normal	Normal	Normal	Normal
Tone B	Normal	Normal	Normal	Normal	Normal	Normal
Tone C	Normal	Normal	Normal	Normal	Normal	Normal
Tone D	Normal	Normal	Normal	Normal	Normal	Normal

Decoding

	[1]	[2]	[3]	[4]	[5]	[6]
Tone A	Alpha	Alpha	Alpha	Alpha	Alpha	Alpha
Tone B	Alpha	Alpha	Alpha	Alpha	Alpha	Alpha
Tone C	Alpha	Alpha	Alpha	Alpha	Alpha	Alpha
Tone D	Alpha	Alpha	Alpha	Alpha	Alpha	Alpha

Print

Save

Load

Write

Read


USB programmer disconnected

NO PAGER

Normal .. Pager will beep as per setting
 Urgent .. Pager will beep special urgent tone and vibrate
 Priority .. Pager will beep even set Vibrate
 Manual .. Pager will alert until pressing any key

Alpha .. Pager will decode 7 bit
 Numeric .. Pager will decode 4 bit
 Tone Only .. Pager is Tone only mode
 Disable .. Pager does not decode

J25 Programmer



General Display Alerting Misc Reminders Duplicate Messages

Folders Out Of Range Over The Air Hand Program Tones **Names**

☐ Display Text for Cap Codes and Beep Codes

Cap Code Names		Beep Code Names	
Cap Code 1 Description	bbbbbb	Beep Code A Description	gggggg
Cap Code 2 Description	ccccc	Beep Code B Description	hhhhh
Cap Code 3 Description	ddddd	Beep Code C Description	iiii
Cap Code 4 Description	eeeee	Beep Code D Description	jjjj

Print Save Load Write Read

USB programmer disconnected NO PAGER

In the time stamp display, pager will display Message Status.
Normally it indicate
Message Number 1 to 6
Beep code a,b,c,d

This setting can replace such number to TEXT display